



pearson
ferrier®

8 RIVERBANK GARDENS 50 TOTTINGTON ROAD

Bury, BL8 1JY

Offers Over £125,000

8 RIVERBANK GARDENS 50 TOTTINGTON ROAD

Property at a glance

- PENTHOUSE APARTMENT
- TWO DOUBLE BEDROOMS
- IMMACULATE CONDITION
- IDEAL FIRST TIME BUY
- NO ONWARD CHAIN
- WALKING DISTANCE TO BURY TOWN CENTRE

Stunning two double bedroom penthouse apartment located in a convenient position on Tottington Road and is within walking distance to Bury town centre with local shops, schools being on your doorstep and the Kirklees nature trail being close by. The property is ideal for a first time buyer or buy to let investment and briefly comprises of: Entrance hall, open plan lounge/kitchen/diner, two double bedrooms and family bathroom. The property benefits from allocated parking space and is offered to the market with no onward chain.

Tenure - Leasehold - 999 years from 1 January 2007

Ground Rent £150 per year

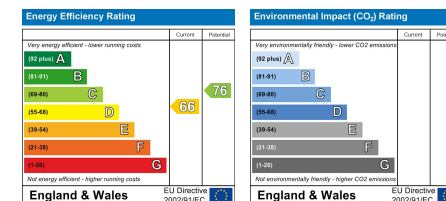
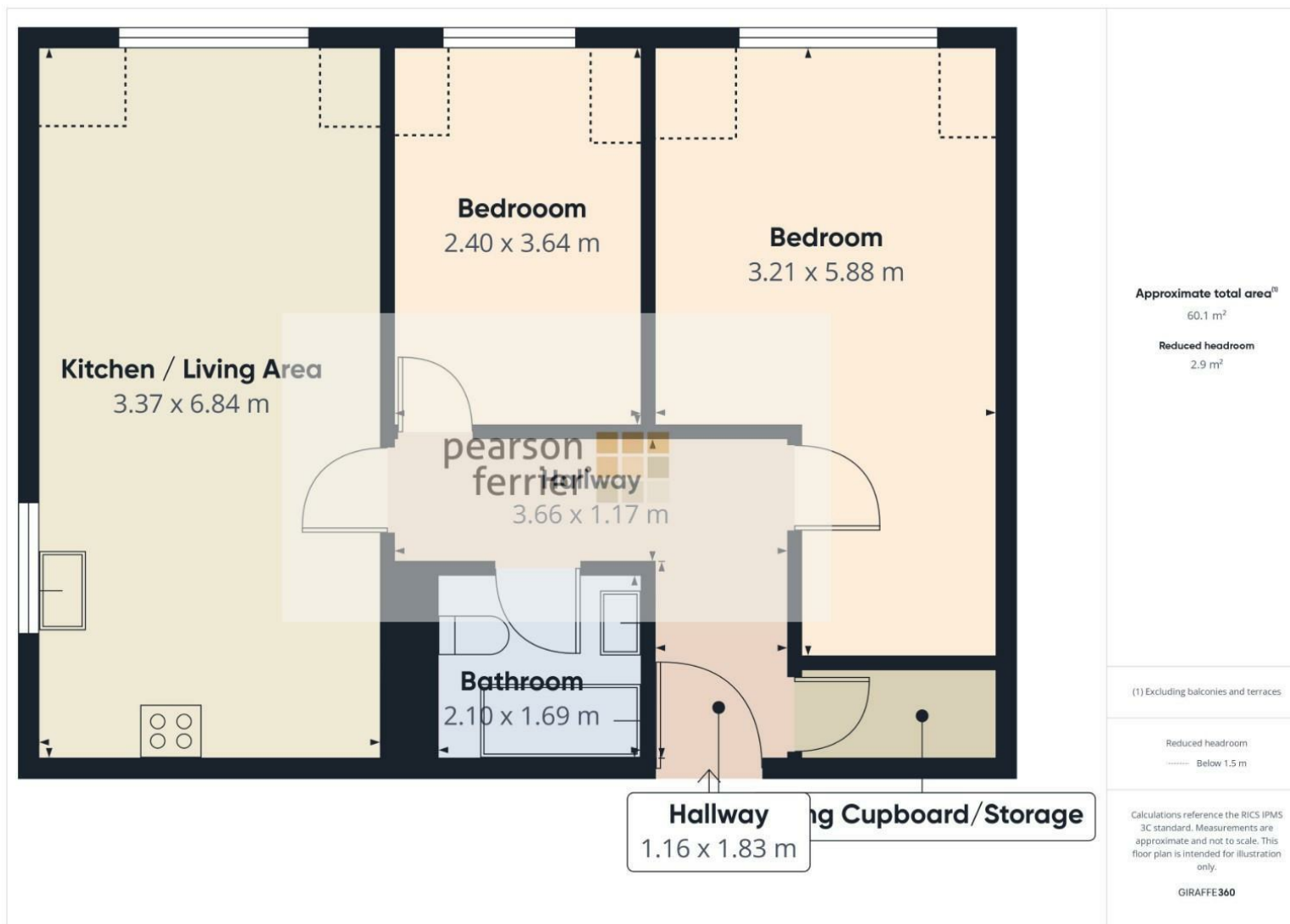
Service Charge - £62.50 per month (paid Yearly £750)

Council Tax Band - A

EPC - D







Bury Office
435/7 Walmersley Road, Bury, Lancashire, BL9 5EU
Telephone: 0161 764 4440
Fax: #
Email: bury@pearsonferrier.co.uk

www.pearsonferrier.co.uk



All statements contained in these particulars are for indicative purposes only and are made without responsibility on the part of Pearson Ferrier and the vendors of this property and are not to be relied on as statements or representations of fact. Potential purchasers should satisfy themselves by inspection or otherwise as to the accuracy of such details contained in these particulars.